

esoftware

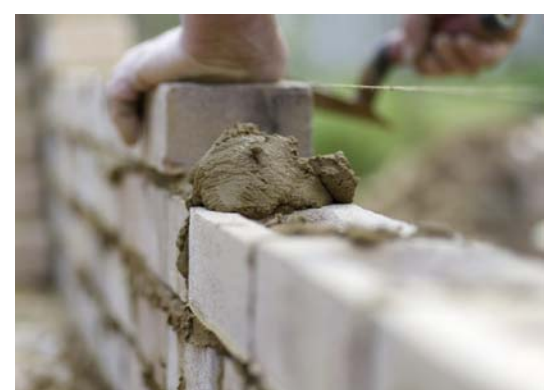
eCONSTRUCT

Where construction industry IT just got competitive.

In the construction industry...

The trouble with computer systems is that they just don't seem to cater for what you do and how you work.





Unless you are a massive enterprise with equally large budgets, then there is every chance that IT doesn't really give you very much at all to help effectively run your business.

So you may well be more than frustrated that computer systems can't economically help:

- Streamline the currently highly manual and time consuming preparation of quotes.
- Manage those RFIs and quotes once presented.
- Control and manage sub-contractors.
- Simply track the 'cost to complete' your projects. So you can simply identify those which are delivering a good return and those that are not. And why.

If that's the case, you may like to know that computing has just changed. Substantially. And very much for the better.

A fact that's been brought about by the development of the comprehensive, but very simple to use construction business software, supplied and supported by Epitome.

It's a solution that's been specifically designed to meet all of your needs, demands and challenges. It's all about the specifics of your business. And it's uncompromising on the range of facilities delivered.

Facilities that include:

Quotation Management

- **Plan Allocations** Assigns plans for projects to specific jobs.
- **Request for Quote Tracking** Comprehensively tracks and helps manage your sub-contractor inputs.
- **Mark Ups** Streamlines the mark up of individual tasks or project stages when preparing quotes. Either by set amounts or percentages.
- **Provisional Cost Management** Automatically reports on totally up-to-date variances from planned costs.

Sub-contractor Management

- **Contract Management** Tracks contractor performance for individual jobs.
- **Contractor Control** Streamlines the control of which sub-contractors have responded to individual RFIs or jobs, with ready and automated tracking of their submissions.
- **Acknowledgement Reports** Automates the preparation of accepted/non-accepted response to possible sub-contractors.

Contract Administration

- **RFI Control** Provides ready traceability of requests for information and quotations.
- **Variation Management** Consistently monitors planned versus actual project costs while also efficiently tracking the financials for requested additional work.
- **Cost to Complete Reporting** Gives an instant snapshot of these all important figures.
- **Progress Claims** Simply generates claims based on stage completion, set date payments or contract schedules.
- **Retentions** Manages these payments based on pre-determined contractual agreements.
- **Cash Flow Reporting** The all essential delivery of a 'by job', 'by project' or 'by a range of projects' view of planned versus actual costs and revenues.

Logistics

- **Purchasing** Automates the purchase of materials at a designated project stage and automatically allocates each acquisition to the relevant job.
- **Inventory Control** Delivers full control of held inventory. Across multiple warehouses.

Document & CAD Integration

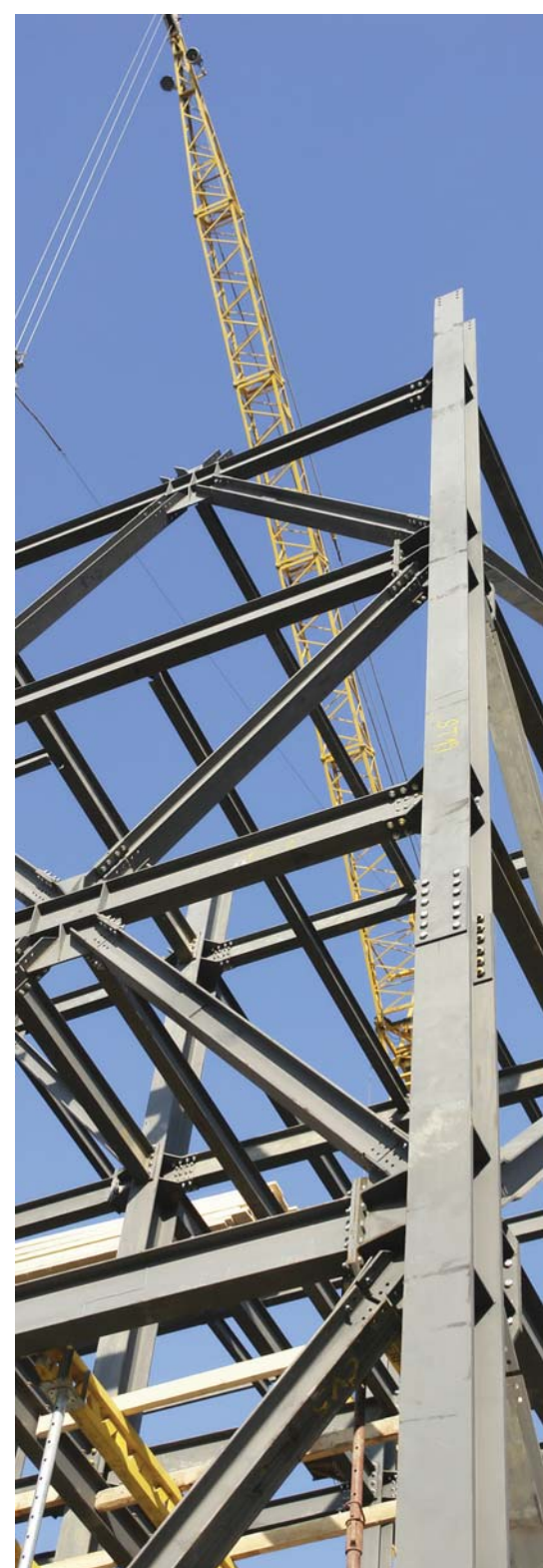
- **Documents** Most significantly enables all documentation, CAD images and correspondence to be filed against their relevant jobs.
- **Version Control** Provides assistance to ensure reference is always being made to the latest plans, documents and correspondence.

Plant Maintenance

- **Asset Control** Tracks all costs associated with plant and equipment, while driving planned maintenance and service imperatives.

Plus and most importantly:
Simple integration with **MYOB** or **QuickBooks** so you can enjoy all the benefits of the new software without having to change your current accounting and payroll system.





For more information
or for a comprehensive
demonstration,
call us today.
1800 776 498

Head Office:

Level 1, 16D Ashwin Parade
Torrensville SA 5031

P: 1800 776 498
F: (08) 8152 0871
E: info@epitome.com.au
W: www.epitome.com.au

epitome

eCONSTRUCT

Where construction industry IT just got competitive.