

esoftware

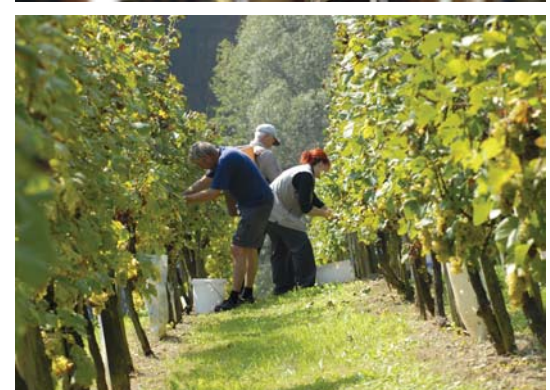
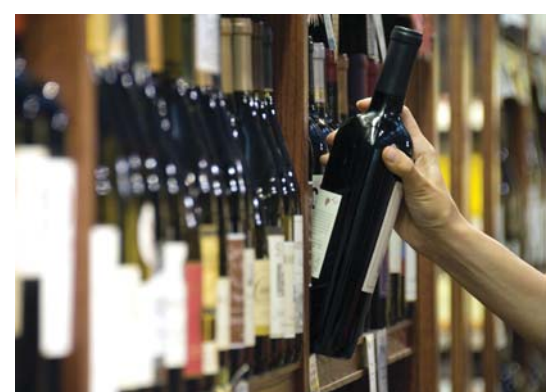
GOLDMEDAL

Where wine industry IT just got smart.

Whether it's about your vineyard, wine production, bottling operations, sales, distribution or marketing...

The trouble with computer systems is that they just don't seem to fully cater for the wine industry.





Unless you are a massive operation with equally large budgets, then there is every chance that IT doesn't really give you what you need to help effectively run your wine industry business from end to end.

So you may well be more than frustrated that computer systems can't help:

- Drive your operations from the vineyard to the consumer.
- Effectively monitor and control all, and often highly variable, costs for each vintage.
- Contribute as much to wine production activities as they do to basic accounting.
- Give you immediate access to the most recent management data no matter where you may be in the world.
- Deliver software tools to cellar door activities.
- Enhance order taking that remains a slow, arduous and error prone task.
- Speed order picking and despatch, and offer streamlined links to Australia Post.
- Provide highly accurate inventory management.
- Foster the contact with your wine club/cellarmaster's club members.
- Reduce the all too long hours you have to work.

If that is the case, you may like to know that computing has just changed. Dramatically. And certainly for the better.

A fact that's been brought about by the development of the comprehensive, but very simple to use Ostendo wine industry software supplied and supported by Epitome.

It's a solution that's been specifically designed, from the ground up, to meet all of your needs, demands and challenges. It's all about the specifics of your business. And it's uncompromising in the range of facilities delivered.

Facilities that include:

- **Wet Tax** Fully manages all tax obligations including the discrimination between bottle sales and promotional use.
- **Multi Warehousing** Facilitates full inventory control, distribution and despatch no matter how many stock centres you have.
- **Multi Bin Location** Fully and automatically manages stock over any number of bin locations.
- **E-Parcel** Integrates your pick and despatch operations with the courier applications of Australia post.
- **Wine Allocation** A fast, streamlined and highly responsive tool that substantially improves transactions with distributors.
- **Wine Club Marketing** Enhances and promotes your day-to-day contact with valued repeat clients.
- **Batch Control** Monitors and reports on the precise cost for each vintage.
- **Bottling Date** Tracks the bottling date of each vintage.
- **Barcodes** Comprehensively automates barcode production to speed operations, reduce errors and grow productivity.
- **Integrated Point-of-Sale** Directly links your cellar door to all relevant IT systems.
- **Fast Order Entry** Eliminates the delays, complexities and errors inherent in current order processing.
- **Customer Order Pad** Speeds order taking by presenting a sub set of your total product range that is specific to individual customers.
- **Customer Order Entry** Provides customers with electronically delivered order spread sheets which they can complete and return via email of fax.
- **Van Delivery Rounds** Substantially enhances delivery productivity.
- **Negotiated Pricing** Streamlines the effort needed to work with different price lists.
- **Advanced Reporting** Presents highly flexible reporting that enables you to rapidly get the information you need, when you need it.
- **Multiple Product Unit Measures** Making it a straightforward task to buy or sell in bottles, cartons, dozens or pallets.
- **Manufacturing** Delivers the tools to track all production costs and stock usage.
- **Vineyard Costing** Furnishes the potent tools to track each paddock for costs and yields.

Plus and most importantly:

Simple integration with **MYOB** or **QuickBooks** so you can enjoy all the benefits of the new software without having to change your current accounting and payroll system.





For more information
or for a comprehensive
demonstration,
call us today.
1800 776 498

Head Office:

Level 1, 16D Ashwin Parade
Torrensville SA 5031

P: 1800 776 498

F: (08) 8152 0871

E: info@epitome.com.au

W: www.epitome.com.au

epitome

GOLDMEDAL

Where wine industry IT just got smart.