

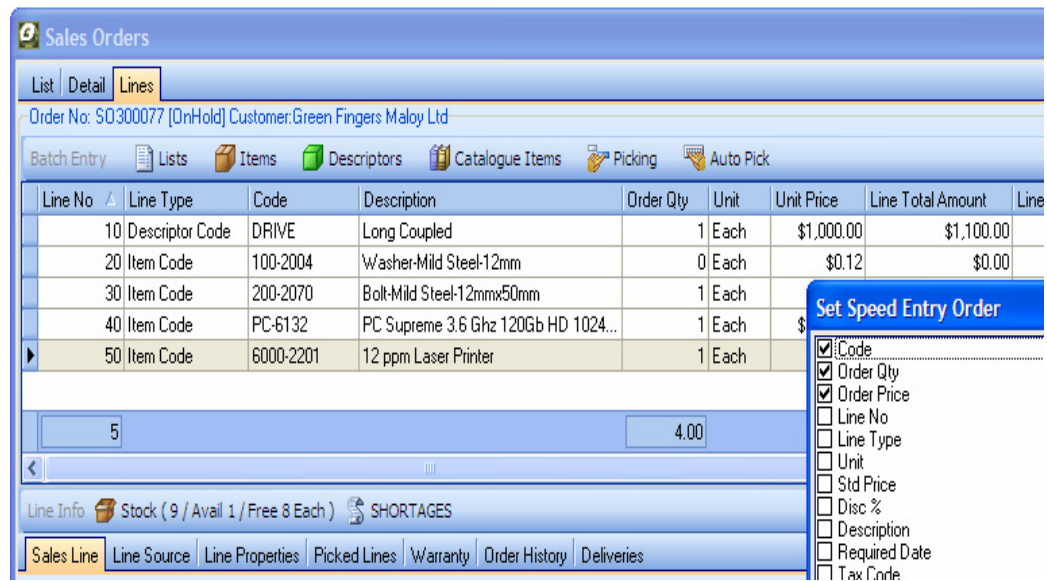
# Distribution

## Order Entry Process

Sales orders with Ostendo are made easy regardless of the complexity of needs.

- > Is every order totally different?
- > Is each one relatively similar?
- > Do we take a few high-value orders or many orders for low-value items?
- > Do we produce quotations?
- > Do we send order acknowledgements?
- > Can we apply complex pricing rules, priorities and set part-shipment flags?
- > What if I need to thoroughly check each item I add – or create new ones?
- > What if I need to be able to just enter lines quickly using just the numeric keypad like on the old DOS systems?
- > How will the system prioritise available stock – will it hold it for previous orders or let me sell it regardless?
- > How can any system meet all my needs without costing the earth?

And, in answering all such questions, that's precisely where Ostendo's flexibility in the area of sales order processing is exceptionally powerful.



We have at least six different ways to enter line items. We provide instant stock availability including stock allocated on a priority basis. You can set the order of the fields as you want them if using high speed order entry and searching for or creating items is a simple part of this easy to use process.



Fact Sheets are available for a variety of industries & uses:  
**Manufacturing, Distribution, Point of Sale, Job Costing,  
 Complex Projects, Pricing, Suppliers & Equipment Servicing.**  
 These can be downloaded from: [www.epitome.com.au/go/factsheets](http://www.epitome.com.au/go/factsheets)

If you have a controlled warehouse designed for high speed processing of orders then you will more than appreciate Ostendo's capabilities in the processing of what we call sales deliveries.

A delivery can be created immediately prior to shipment based on what is available to send, dynamically allocated from a recent supplier delivery. Once done this can then be tracked at any stage during for example:

- > The picking.
- > The packing.
- > The labeling.
- > The delivery processes

This is all available on-line, so you can be onsite in the warehouse manager's office or working remotely from any other connected location.

The screenshot displays the 'Sales Deliveries' application window. It features a top navigation bar with 'List', 'Detail', and 'Lines' tabs. The main area is divided into several sections:

- Delivery Details:** Includes fields for Delivery No (2), Required Date (15/04/2007), Delivery Date (15/04/2007), Status (Invoiced), Customer (Blue Sky Traders), Order No (D0300035), Invoice No (500022), and Tracking Code.
- Weights & Volumes:** A table with columns for Weight and Volume, and rows for Planned (Calc), Picked, and Actual. Units are Kg and M3.
- Freight Information:** Includes Shipping Method (OverNightCourier), Shipping Reference, Charge Freight (checked), Freight Amount (\$10.00), Freight is Taxed (checked), and Tax Code (GST).
- Delivery Activity Tracking:** A table with columns for Delivery Activity, Status, Employee, and Date & Time Completed. Activities include Pick List Document, Picking Process, Packing Process, Shipping Labels, Delivery Document, and Shipping.

You can provide all employees access to the status of each customer's order so your staff and customers have the highest level of service possible.



Fact Sheets are available for a variety of industries & uses.  
**For all enquiries call 1800 776 498**

Head Office: Level 1, 16d Ashwin Parade, Torrensville, SA 5037.

Phone: 08 82380400 Fax 08 81520871

Email: info@epitome.com.au Internet: www.epitome.com.au

© Copyright 2010, Epitome Software Pty Ltd.