

Manufacturing

Manufacturing is never easy for a small company:

- > Do you capture actual labour costs or not?
- > Do you track variations to expected product costs or not?
- > When the cost of raw materials move how easy is it for you to re-cost (and thus reprice) all of the affected products (including sub-assemblies or lower-level components)?
- > Can you easily recapture details for product that you manufactured long ago?

Run or Setup	Seq	Step	Line No	Line Type	Code	Description
Run	10	Assembly	10	Item Code	760-2176	Tube-Stainless Steel-25
Run	10	Assembly	20	Labour Code	LAB-ASSEMBLY	Assembly Labour
Run	10	Assembly	30	Item Code	900-2182	Handle Grip-Rubber-25
Setup	10	Assembly	50	Labour Code	LAB-ASSEMBLY	Assembly Labour
Run	20	Finishing	40	Labour Code	LAB-INSPECTION	Standard QA Labour

Ostendo provides the ability to apply labour, inventory and cost charges to either or both setup and runtime operations, consume material during setup, apply overhead costs by variation to standard batch sizes, hold limitless routings steps and notes by step or by line, cost by-products and co-products automatically and capture actual costs along with any cost variation.

Code	Description	Qty	Unit	Cost %	Style
100-2004	Washer-Mild Steel-12mm	2	Each	40	CoProduct
110-2039	Washer-Stainless Steel-14mm	1	Each	1	ByProduct

In addition multi-level bill of material (BOM) reporting is provided with virtually unlimited levels. The Cost Roll-up program displays all sub levels and provides a fully-detailed costing of each product and each sub-assembly level.

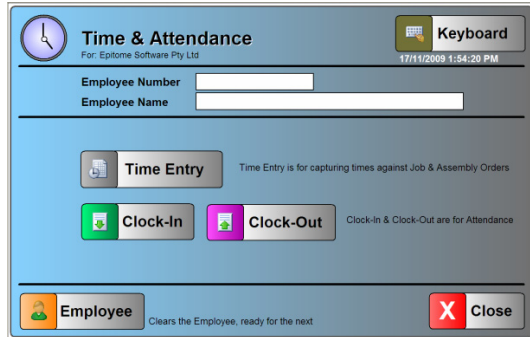
```

Bills of Material
├── WAGON-2189
│   ├── [1] 510-2169 ( Sheet-Stainless Steel-1200mmx2400mm ) ( 1 ) ( Each )
│   ├── [1] LAB-ASSEMBLY ( Assembly Labour ) ( 2 ) ( Hours )
│   ├── [1] LAB-WELDING ( Standard Welding Labour ) ( 2 ) ( Hours )
│   ├── [1] LAB-PAINTING ( Standard Painting Labour ) ( 0.5 ) ( Hours )
│   ├── [1] 1500-2185 ( Green Paint ) ( 1.5 ) ( Litre )
│   └── [1] 1800-2190 ( Rear Wheel Assembly ) ( 1 ) ( Each )
│       ├── [2] 800-2179 ( Wheel-Plastic-250mm ) ( 2 ) ( Each )
│       ├── [2] 840-2181 ( Axle-Mild Steel-25mmx500mm ) ( 1 ) ( Each )
│       ├── [2] 805-2180 ( Wheel Nut-Mild Steel-25mm ) ( 2 ) ( Each )
│       └── [2] 850-2192 ( Clamp & Bearing ) ( 2 ) ( Each )
    
```



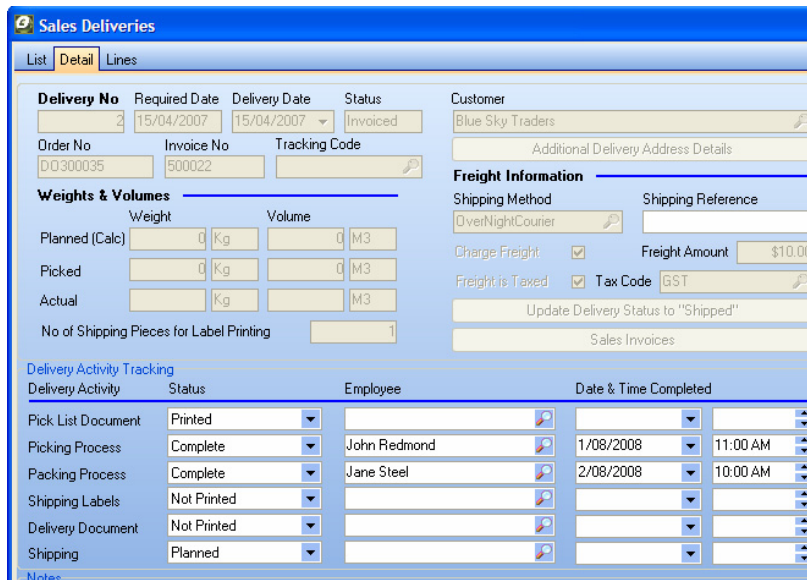
Fact Sheets are available for a variety of industries & uses:
**Manufacturing, Distribution, Point of Sale, Job Costing,
 Complex Projects, Pricing, Suppliers & Equipment Servicing.**
 These can be downloaded from: www.epitome.com.au

In addition, Ostendo also provides the tools to capture employee attendance or work times by operation. These tools need to be configured by Epitome to suit each particular installation.



If you have a controlled warehouse designed for high speed processing of orders then you will benefit from Ostendo's capabilities in the area of sales deliveries. Deliveries can be immediately created prior to shipment based on what is available to send and dynamically allocated from a recent supplier delivery.

Track the picking, packing, labeling and delivery processes on-line in the warehouse manager's office. You can give every employee access to the status of each customer's order.



Provide your staff and customers with a fast & high level of service.

Fact Sheets are available for a variety of industries & uses.
For all enquiries call 1800 776 498

Head Office: Level 1, 16d Ashwin Parade, Torrensville, SA 5037.

Phone: 08 82380400 Fax 08 81520871

Email: info@epitome.com.au Internet: www.epitome.com.au

© Copyright 2010, Epitome Software Pty Ltd.