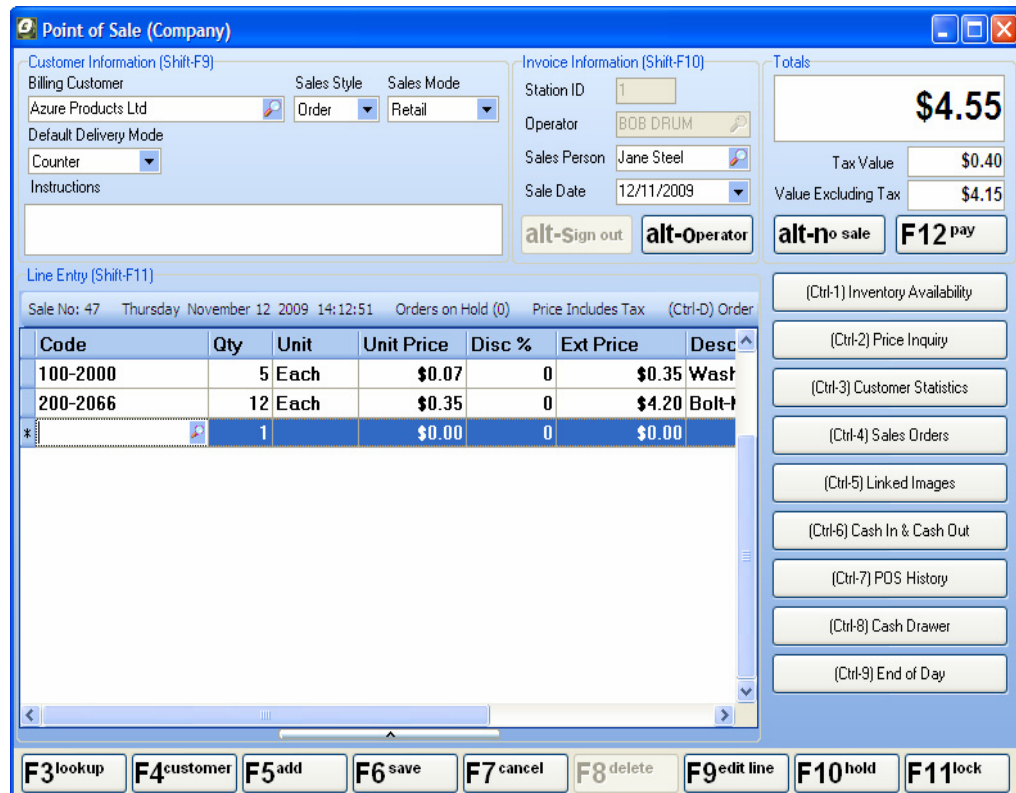


Point of Sale

Counter Sales or Point of Sale (POS) caters for retail, layby orders, workshop orders and also supports multi terminal and multi branch operations.

Ostendo identifies POS orders as one of these five types:

- > Retail counter sale
- > Pickup from warehouse
- > To be delivered
- > Workshop order
- > Laybys



POS orders can also be taken as workshop orders for repair and service work. Customer required dates can be recorded while reference notes and instructions can be entered before printing a simple workshop job sheet.

Layby orders have lay-by periods, terms and progressive payments. 'On account' sales option enable you to raise a POS order and issue the goods immediately. The invoice is posted to the customer's account for subsequent payment. POS orders can be placed 'on hold' and a new order commenced.

New sale sign in option is available for retail staff with 'opening' cash. The alternate operator facility allows supervisors to override a price for example.

● ● ● ●

Fact Sheets are available for a variety of industries & uses:
**Manufacturing, Distribution, Point of Sale, Job Costing,
 Complex Projects, Pricing, Suppliers & Equipment Servicing.**
 These can be downloaded from: www.epitome.com.au

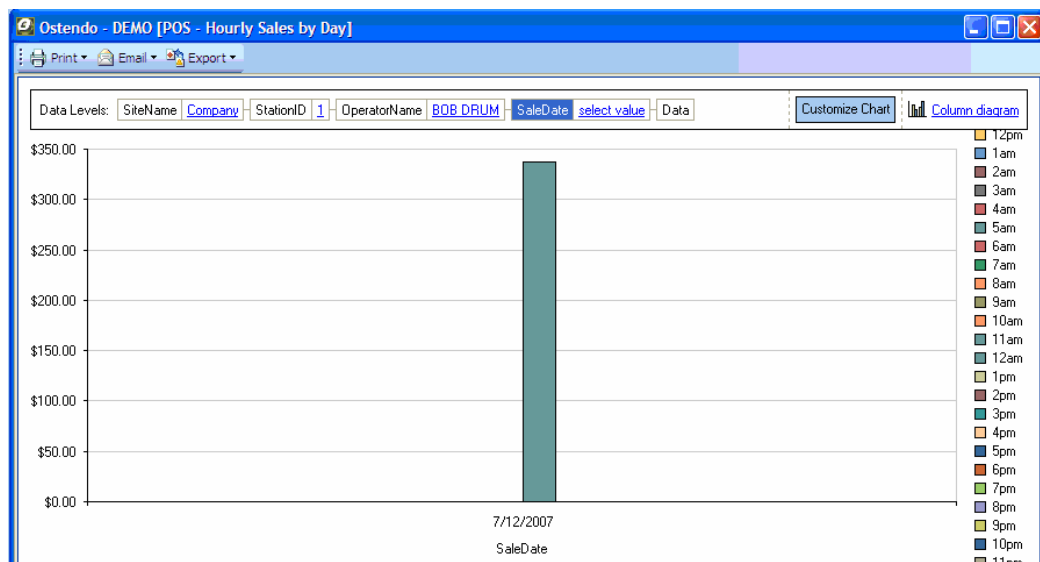
Prices can be shown including tax or excluding tax in the POS screen and on the receipt or invoice printout. Images, product messages and customer messages can also be displayed during order entry.

Quotations can be given within the point of sale screen. The main difference between a quote and an order is that a quote doesn't book stock out and a quote can't be paid for.

Ostendo POS has a simple mouse / keyboard / scanner interface designed for fast entry. The scanning mode can be setup with automatic defaults such as quantity equals 1, cash drawer, scanner, receipt printer and pole display enabled.

Ostendo also works with multiple barcodes e.g. serial numbers while other barcodes can be setup and defined for product attributes such as colour and size types of combinations

Full POS end of day processing and blind end of day cash up and reports are available.



Cash-Drops covering office drops and expenses are handled. The Cash Drop function enables four key operations to be carried out during the course of the day-to-day activities:

- > Cash Drop Out: is where monies are taken from the till
- > Cash Drop In: is where the till Float is being 'topped up' from the office
- > Pay Out: is where a cash withdrawal has been made from the till to purchase miscellaneous items or services (like petty cash)
- > Pay In: is where cash is added to the till. This allows for return of cash or change from a previous petty cash withdrawal

Fact Sheets are available for a variety of industries & uses.
For all enquiries call 1800 776 498

Head Office: Level 1, 16d Ashwin Parade, Torrensville, SA 5037.

Phone: 08 82380400 Fax 08 81520871

Email: info@epitome.com.au Internet: www.epitome.com.au

© Copyright 2010, Epitome Software Pty Ltd.